

MILTON ROAD REDEVELOPMENT



Elm Grove view (centre name not yet chosen – this is a placeholder by the architects)

We have now handed the site over to the construction company to demolish the existing hall and deliver the new 3 storey building. This briefing recaps the story so far, and looks forward to the build and future functions of our new key development.

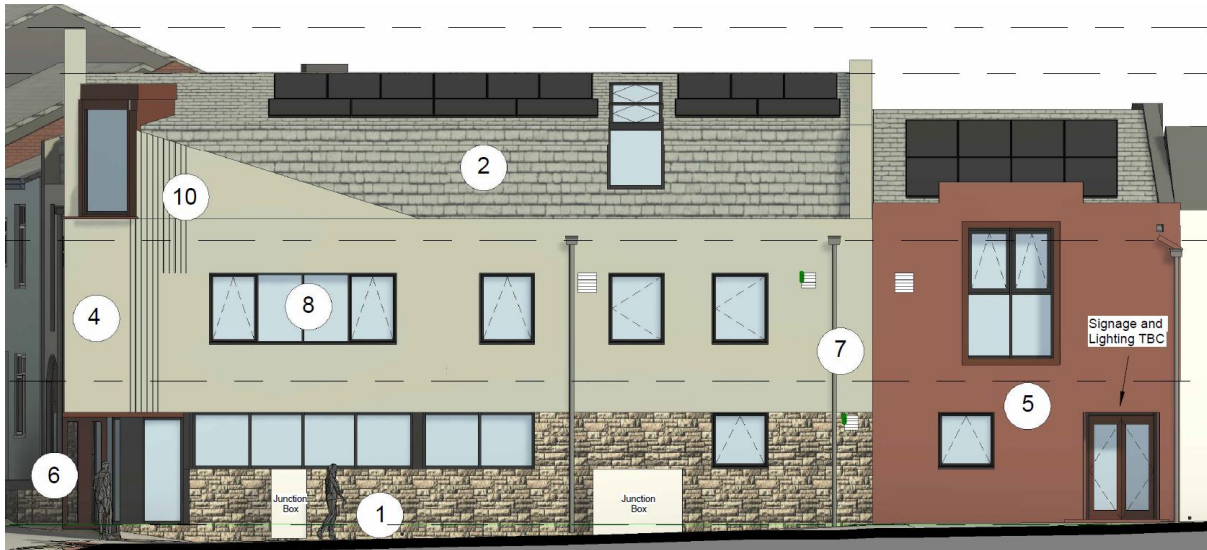
IN SUMMARY WHAT IS THE PROJECT.

The project is to replace the current St Joseph's Hall and the university chaplaincy with a new three storey building on the footprint of the current hall, which will additionally serve as a base for missionary outreach for East Brighton and for the whole of the new parish of Brighton and Hove.

HOW WILL THE NEW CENTRE BE USED

The middle floor will primarily serve students and young adults, replacing and adding to chaplaincy facilities. The upper floor includes a large open space, enabling new activities and the kinds of things we previously used the hall for. The ground floor contains a community café area and a number of smaller spaces allowing us to take forward new exciting opportunities to engage and serve the local community.

A fundamental aim is to integrate student chaplaincy into parish life, so that students are involved in more cross-age activities, and leave university with an appreciation of parish membership



Milton Road view showing contrasting end element

WHAT HAS HAPPENED TO DATE

The project is a joint development between East Brighton and the Diocese. The university chaplaincy building has been sold, with the proceeds to be made available to the project. After extensive assessment Sunninghill Construction have been chosen as the builders and the Lee Evans Partnership as the architects. We have now reached the end of an extensive period of design, value engineering and engagement with local authority planners so that the formal construction project can now start.

WHY IS THE DEMOLITION AND BUILD STARTING ONLY NOW

The design and planning period has been prolonged primarily because of the need to meet very stretching sustainability targets set by the Local Authority, and by the need to identify and deliver a number of savings to keep the project affordable.

HOW IS THIS BEING FUNDED

The funding comes from the sale of the chaplaincy, the capital funds still held by the parish originating in the sale of St Francis church, a major contribution from Diocesan funds, and a loan against future land sales within the new parish of Brighton and Hove.

WHEN WILL THE NEW CENTRE OPEN.

A final piece of paperwork will be signed imminently, then allowing demolition of the current hall to start. The demolition and construction project is scheduled to take 60 weeks, so that the new building will be handed back to us at the start of 2027. At that point it will be a shell for us to furnish and fit out, so that some parts and functions of the new centre may open before others.

Alongside the build we will need to raise funds for the cost of the new furniture and fittings.

This is the first of a series of briefings we will send as the construction continues.